



Since 1990



# Who we are



Eng. Mircea Bulboaca

“Our goal is to deliver to our partners high-quality, first class projects that promote the principle of minimal social effort, both during project construction and after. We invite you to meet us and become our partners because CONA has

THE POWER TO BUILD SUSTAINABLE!”



Established in 1990, CONA is a 100% Romanian construction company, guided by a strong philosophy of client trust and employee loyalty.

Founded by Eng. Mircea Bulboaca, currently the President of the Group, CONA is able to provide the highest level of construction quality, with capabilities and expertise in general contracting for any industrial and civil projects.

As general contractor we are able to provide complete turnkey solutions: design, execution, electrical and mechanical installations, supply of materials and structures for constructions.



# Our management team



CONA is a family-owned Romanian company, with more than 1,000 employees and projects valued at over 1.5 billion euros.

Our young & high-performance management team, is able to provide tailored services in order to meet any construction project needs.

As a general contractor, together with our partners, we are able cover the most complex projects.



**CEO**  
Eng. CRISTEA Sorin



**Executive Director**  
Eng. OROS Adrian



**Technical Director**  
Eng. GHILEA Horatiu



**CFO**  
Ec. CROITORESCU Maria



**Area Executive Director**  
Eng. MANITIU Cristian



**Operational Director**  
Eng. NEMETH Stefan



**Operational Director**  
Eng. VOINESCU Serban



**Head of Tendering Department**  
Eng. TOPOR Diana



**Head of Purchase Department**  
CRISTEA Andreea



**Director of the Precast Concrete Factory**  
Eng. TOPOR Lucian



**Head of the Legal Department**  
GHILEA Maria



**Director of the Metal Construction Factory**  
Eng. MITEA Cornel



**Director of the Equipment & Transport Department**  
Eng. BUCSA Ciprian



**Director of CON-A MEP**  
Eng. NEAMTU Mihai



**Director of Architecture CONDESIGN**  
Arh. APATEANU Alina

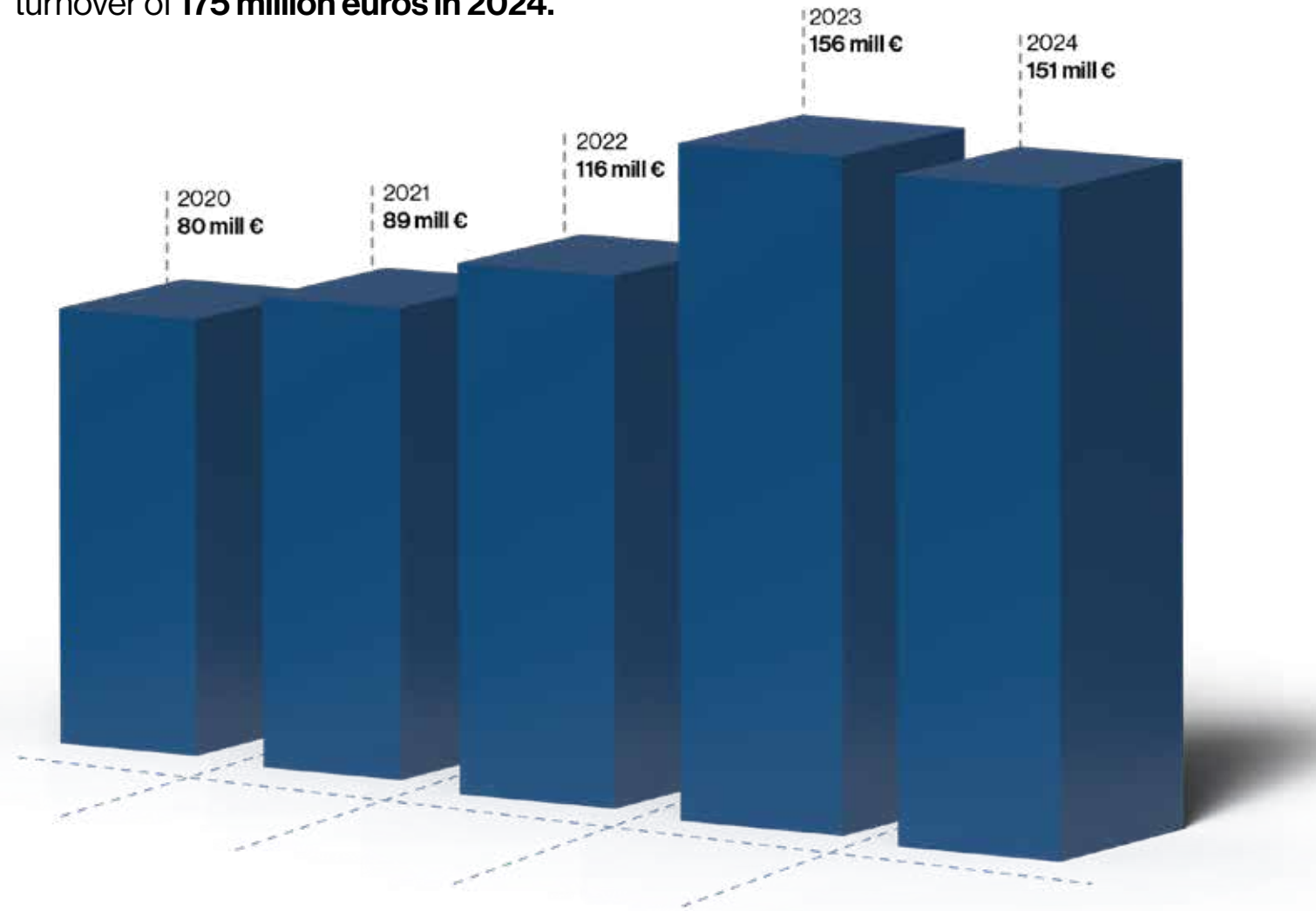


**Director of Structural Design at CONDESIGN**  
Eng. CRISTEA Andrei



# Turnover evolution of CONA Operations

The CONA Group companies achieved a turnover of **175 million euros in 2024**.



## Our capabilities:

- ▣ Management and execution of any type of **"turnkey"** projects;
- ▣ A dedicated young **team of professionals** providing the company's executive management;
- ▣ Use of the most **innovative** materials & technologies;
- ▣ Our own **manpower**;
- ▣ Our own **equipment & machinery** for the execution of all construction works;
- ▣ Our **own production plants**.



# Outstanding achievements



- Over **2,5 million square meters** of delivered projects,
- The fastest execution and design included: **35.000 sqm**, in only **3½ months**,
- **Leader in industrial construction** with over 120 factories built,
- The longest partnership: **11 years** & more than **20 projects delivered**.



# The Group

We are the largest and most experienced Romanian construction company in the industrial segment. CONA has the reputation for regional leadership and outstanding performance as a general contractor.

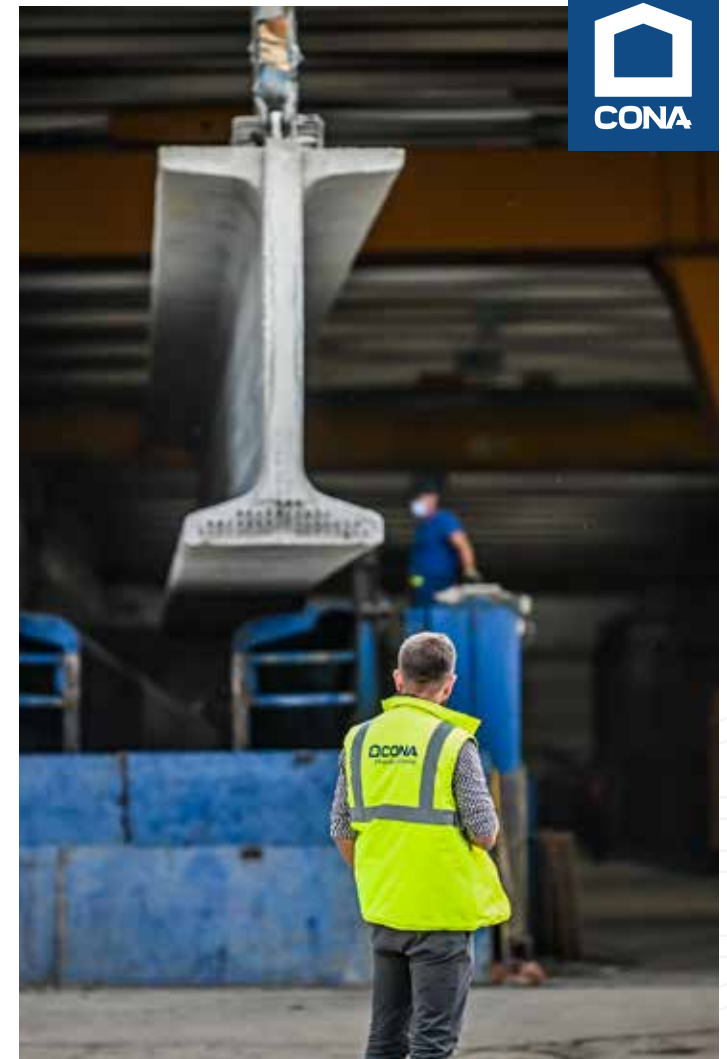


## Integrated Industrial Production Center

CONA owns the largest integrated industrial production center, in Romania. Its reputation extends to the regional level, considering the large production capacity, the complexity of produced elements and the technological capabilities.

CONA owns two production factories, each one with specialized divisions:

- a **factory of metal construction** with a manufacturing facility for aluminum structures and facades production;
- a **factory of precast concrete** which also has a manufacturing division for steel rebar production.



### **OPERATIONS** General Contractor

Delivers turnkey construction projects using its own employees, equipment and machinery. Strong know-how in civil engineering, especially in the industrial and logistics segment. Experience in working with multinational companies, with high standards of quality and safety in construction.

### **CONDESIGN** Architecture and General Design

Is the general design and architecture master brain behind every improvement solution and technology to the technical projects for the CONA works.

Condesign also provides design services for various B2C projects.

### **PRODUCTIONS** Industrial Production

Through the industrial production capacity it provides, CONA PRODUCTIONS is able to deliver complex structures of metal and precast concrete. Also it provides high-quality aluminum-systems and architectural facades systems for the realization of contemporary, energy-efficient constructions thereby supporting sustainable building concepts.

### **MEP** Electrical and Mechanical Installations

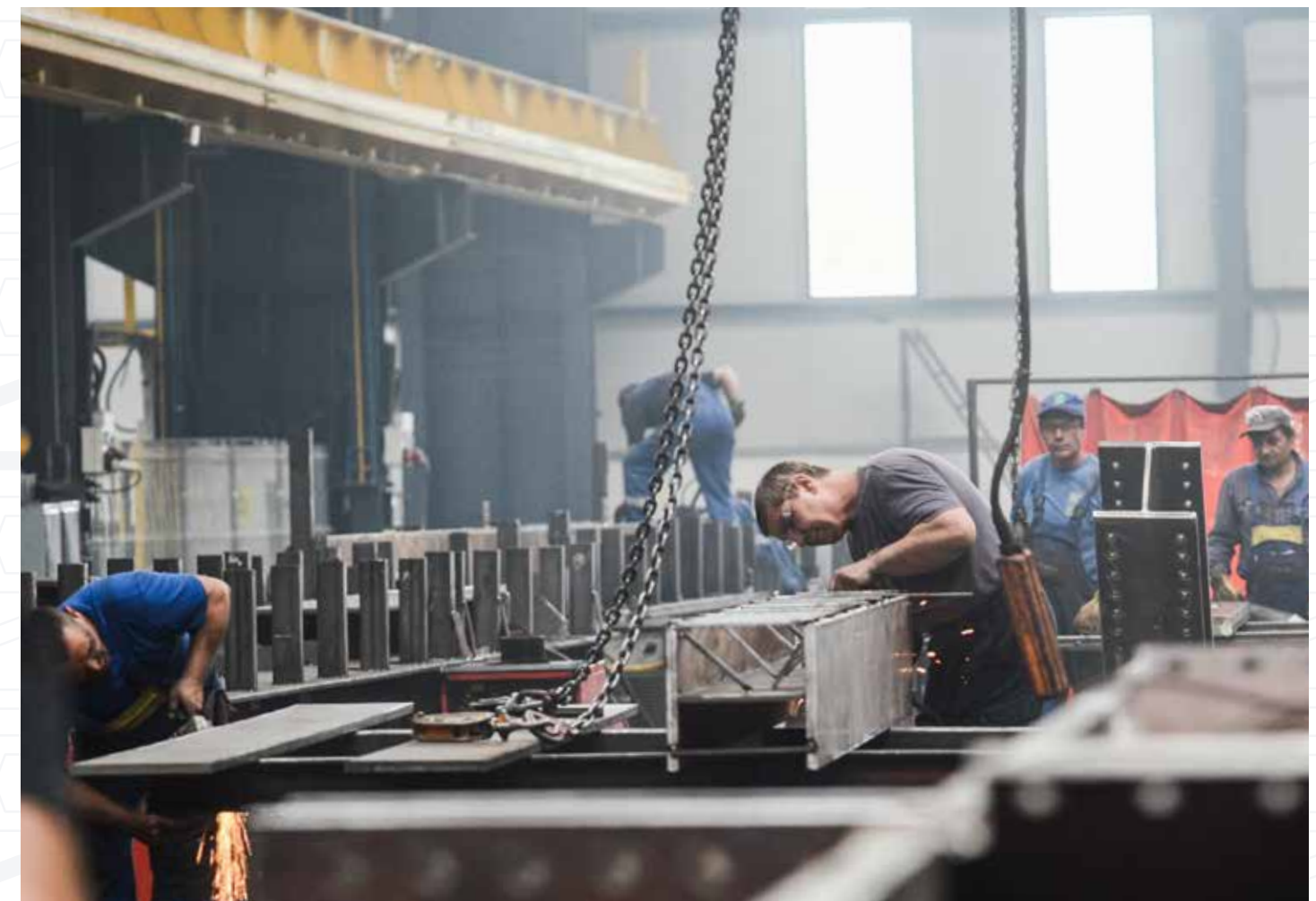
Is fully covering the segment of mechanical and electrical installations, while having an essential contribution in the realization of design and build projects. CONA MEP is also specialized in the field of design and execution of electrical, high current and medium voltage installations, in compliance with the Romanian National Energy Regulatory Authority.

### **IT SOLUTIONS** Security and Automation Systems

Design, development, implementation, and maintenance of integrated security, automation, and logical communication systems.

### **FACILITY MANAGEMENT** Building Maintenance

Maintenance services for systems and equipment related to buildings.





# CON-A FACTORY for precast concrete

Production capacity of 30,000 cubic meters / year,  
equivalent to 300,000 square meters  
of fully prefabricated structure.



# CON-A FACTORY of metal construction

Average production capacity - 10,000 tons / year.  
The production takes place on an area of over 20,000 m<sup>2</sup>.

Integrated services: design, optimization,  
production, transport, installation.



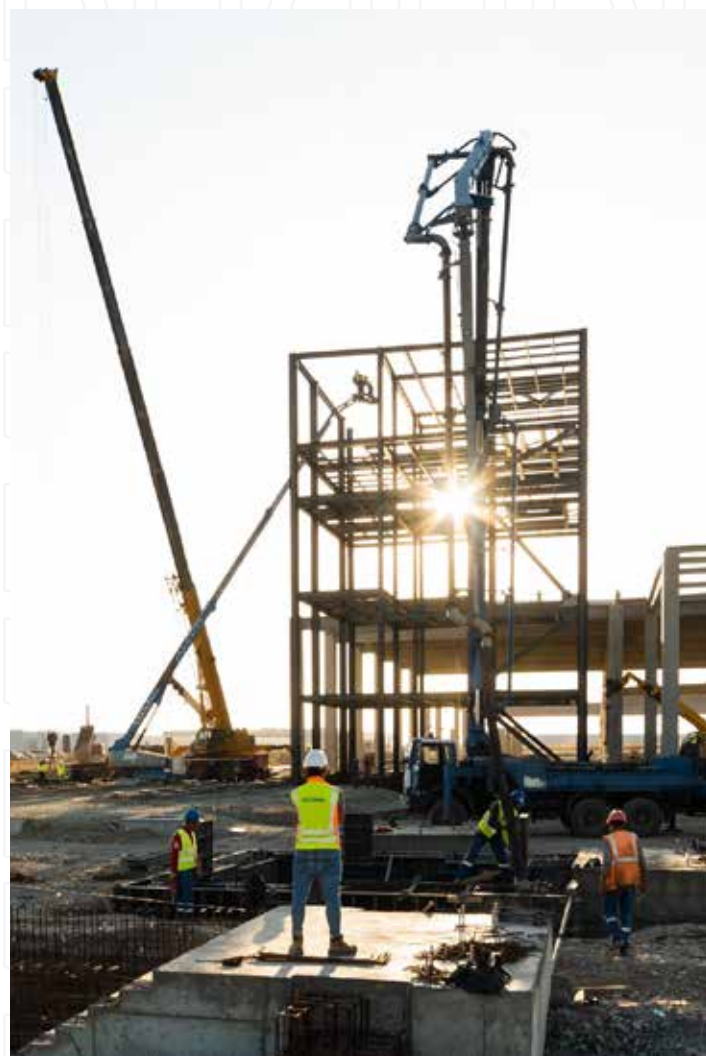


# What we stand for



We take pride in our long-lasting collaborations with multinational companies and large Romanian investors. Millions of square meters built, including, production halls, storage & logistic facilities, office buildings, commercial areas and public works strengthened our strategic position as a reliable partner for our national and international clients.

The common ground for all these challenging projects is high standards of quality and on time delivery of projects, a shared value for both CONA and its partners.



# Our culture & values



In our day-to-day activities, we aim for success, but more importantly, we strive to gain value.

To achieve this, our activities are based on several solid principles that we cultivate within the company and in our relationship with our partners:



**Customer focus**



**Business ethics**



**Integrity**



**Sustainable growth**



**Responsability**



**Inovation**



**Promptness**



**Transparency**





# Industrial



**Tire production factory**  
**Location:** Oradea, Bihor County  
**Built area:** 87.000 m<sup>2</sup>



**Electronic parts factory**  
**Location:** Sibiu, Sibiu County  
**Built area:** 35.500 m<sup>2</sup>



**Production facility, logistics, assembly line and administrative offices**  
**Location:** Sebeș, Alba County  
**Built area:** over 60.000 m<sup>2</sup>



# Industrial

Production factory for vehicle  
electronic command units

Location: Cluj County

Built area: 52.000 m<sup>2</sup>



**Optical fiber production unit**  
Location: Slatina, Olt County  
Built area: 39.900 m<sup>2</sup>



# Industrial



**Bakery products factory**  
**Location:** Câmpia Turzii, Cluj County  
**Built area:** 16.532 m<sup>2</sup>

# Public Work



**Sibiu Municipal Stadium**  
**Location:** Sibiu, Sibiu County  
**Built area:** 17.500 m<sup>2</sup>

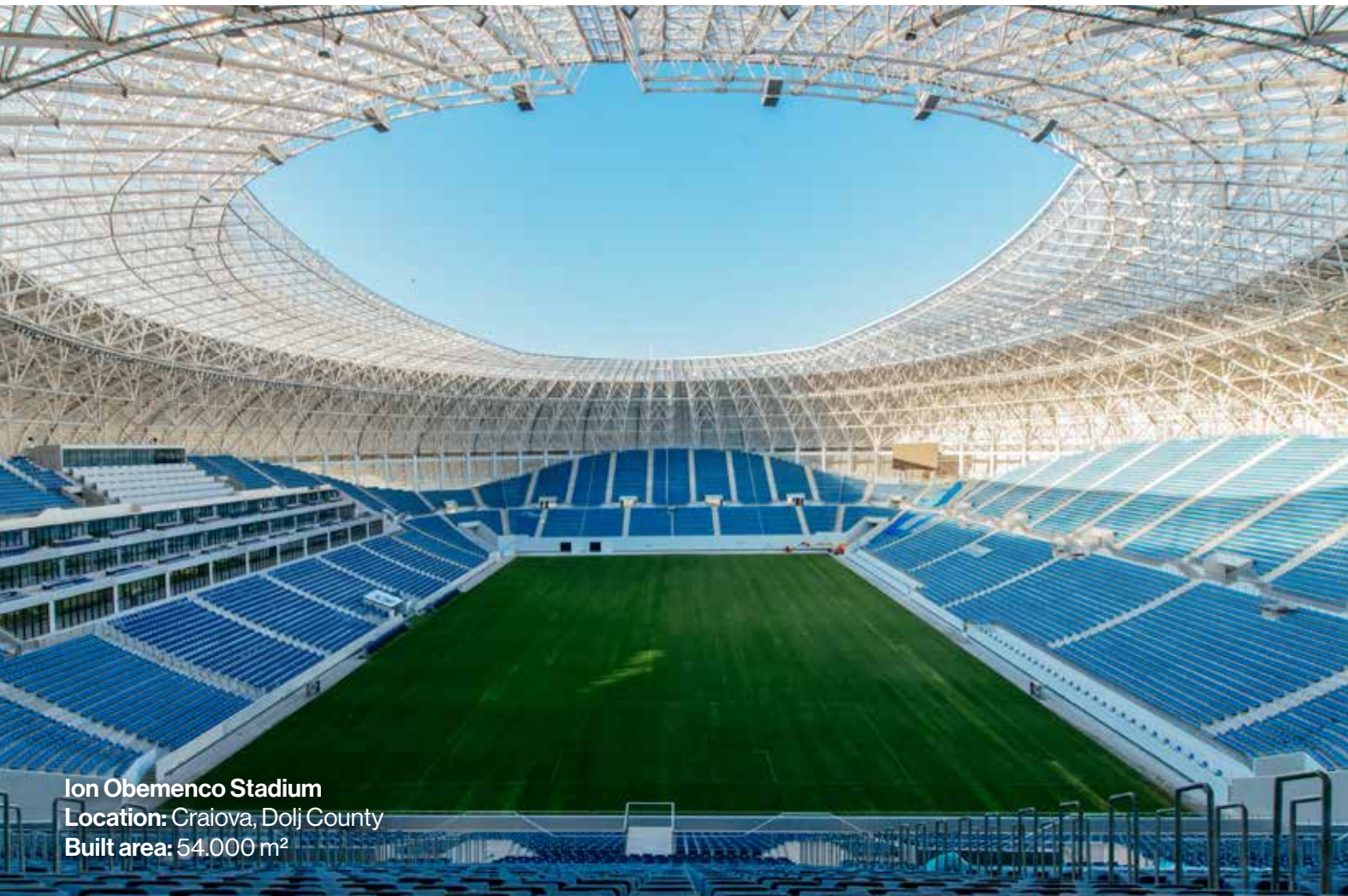


**Refrigeration equipment  
and heat exchangers factory**  
**Location:** Cristian, Sibiu County  
**Built area:** 40.000 m<sup>2</sup>





# Public



**Sibiu International Airport**  
Location: Sibiu, Sibiu County  
Built area: 22.400 m<sup>2</sup>





# Medical



**Ares Medical Center**  
**Location:** Cluj-Napoca, Cluj County  
**Built area:** 2.100 m<sup>2</sup>



**Alba Iulia Municipal Hospital**  
**Location:** Alba Iulia, Alba County  
**Built area:** 2.200 m<sup>2</sup>





# Medical



**Center for Cardiovascular Surgery**  
**Location:** Târgu Mureș, Mureș County  
**Built area:** 19.300 m<sup>2</sup>



**The Regional Hospital from Craiova**  
**Location:** Craiova, Dolj County  
**Built area:** 226.427 m<sup>2</sup>





# Comercial



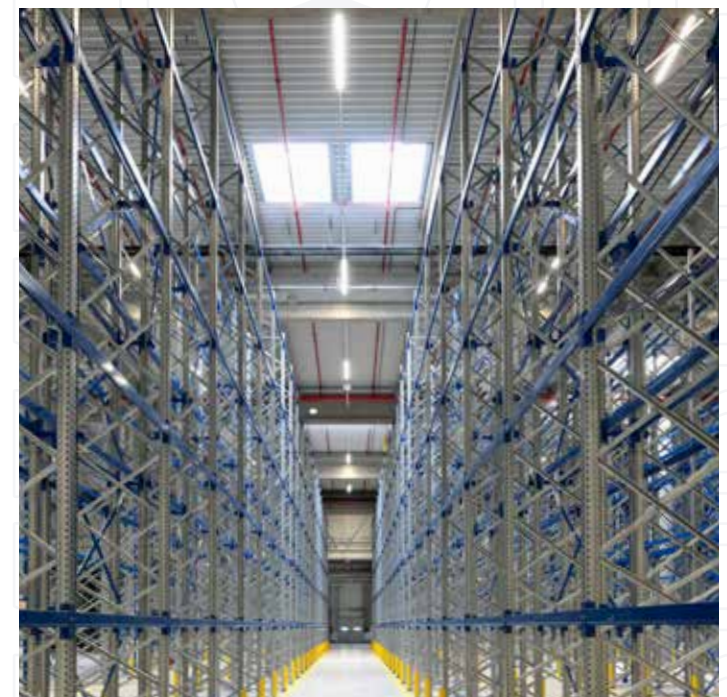
**Shopping City Galati**  
**Location:** Galati, Galati County  
**Built area:** 35.300 m<sup>2</sup>



# Logistic



**Logistic Warehouse**  
**Location:** Mihăilești, Ilfov County  
**Built area:** 49.000 m<sup>2</sup>





# Logistic



**Logistic Warehouse**

**Location:** Stefănești de Jos, Ilfov County

**Built area:** 92.000 m<sup>2</sup>

# Office



**R&D Building and Laboratory**

**Location:** Timisoara, Timis County

**Built area:** 28.000 m<sup>2</sup>

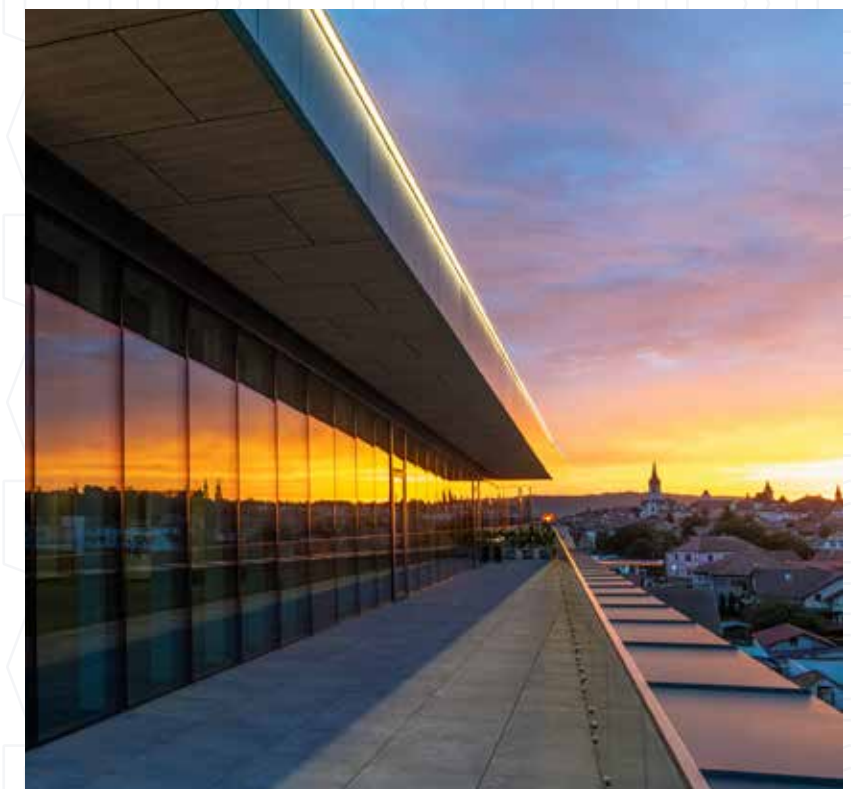




# Office



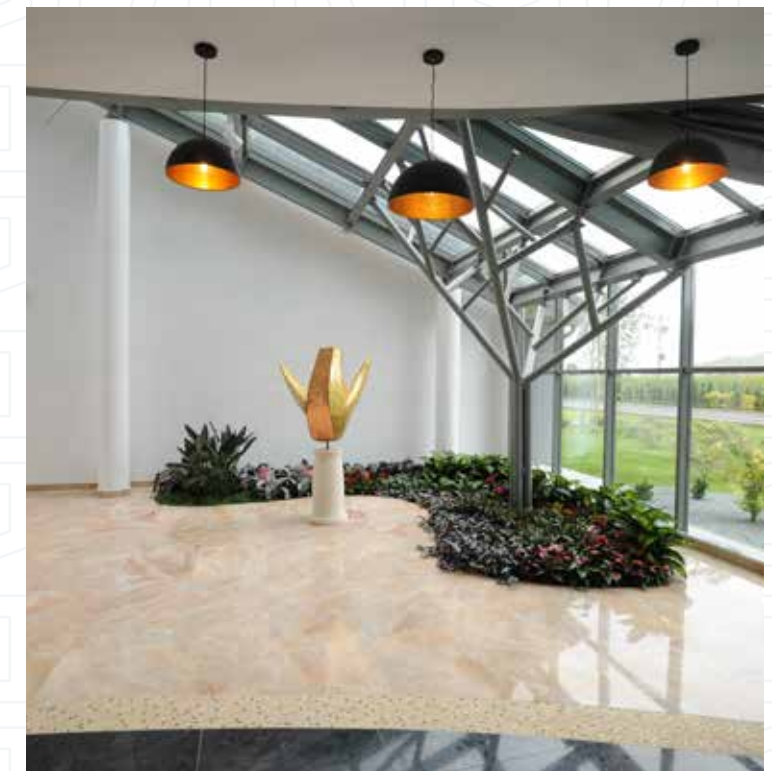
**Riverside Office Building**  
Location: Sibiu, Sibiu County  
Built area: 4.500 m<sup>2</sup>





# Office

**Administrative Headquarters  
and Hall Redevelopment**  
**Location:** Sântimbru, Alba County  
**Built area:** 6.000 m<sup>2</sup>





# Infrastructure



## Tureni Express Road Transilvania Highway

CONA was part of the consortium that carried out the works for the DEx4 Express Road project, which connects the A3 Motorway to DN1 in the Tureni area. Our company was responsible for the execution of all engineering structures – 9 constructions (bridges and overpasses), built in compliance with the highest technical standards. The express road has a length of 5 kilometers and includes an additional 10 kilometers of ramps related to the junctions with A3 and DN1.

**Beneficiary:** The National Company for Road Infrastructure Administration (CNAIR)

**Location:** Cluj County





# Infrastructure



**Bridge over the Olt River**  
**Location:** Voila, KM.0+660  
**Built area:** 93.95 m long and 13.5 m wide



## Bike lane along the Cibin River

The bicycle lane along the Cibin river is built on a route consisting of six distinct segments, with a total length of 3,674 meters. Over 430 trees and numerous shrubs native to the local flora have been planted and the slopes have been hydroseeded over an area of 10,000 sqm. For crossing the Cibin river, two bridges are constructed exclusively for pedestrian and cyclist traffic:

- A beam bridge with trusses, located at the intersection of Viitorului, Crişului, and Mureşului streets;
- A circular bridge with a radius of 15 meters, situated at the confluence of the Rossbach stream with the Cibin river, in front of Octavian Smigheleschi street.

**Beneficiary:** Sibiu City Hall  
**Location:** Sibiu, Sibiu County



# CSR & Environmental Protection

## Corporate Social Responsibility

Our belief is that we have a responsibility towards the communities in which we operate, and we strive to create a profound and positive impact by supporting projects with social, educational, and economic impact. We have embraced with responsibility and openness the challenge of supporting a series of national initiatives with significant impact on society.

A few of the projects in which we have been actively involved are:

- supporting the “Dăruiește Viață” Association, for the improvement of infrastructure and healthcare services within Romania’s public health system;
- supporting the MAGICAMP Association, which helps more than 10,000 families with seriously ill children;
- providing aid to the community in the Praid Salt Mine area, affected by severe floods in 2025.

We also believe in the power of collaboration and in building a lasting relationship of trust with the local community, which is why we support local social initiatives, cultural events, and sports activities in the Sibiu area.

## Environmental Protection

Care for the environment is one of the fundamental values of the CONA Group. Our projects are designed and implemented with respect for natural resources and for the communities in which we operate. By using modern technologies and sustainable processes, we aim to reduce environmental impact and create a balance between economic development and nature conservation.

Since the construction industry can have a major impact on the environment, we treat each stage of our projects with responsibility. The company seeks to reduce carbon emissions, resource consumption, and negative effects on ecosystems through modern and sustainable solutions.

From choosing eco-friendly, durable materials for optimizing construction site processes, we aim to minimize our environmental footprint. In addition, we focus on the energy efficiency of the buildings and infrastructure we deliver, contributing to the development of environmentally friendly projects.

Environmental responsibility is a continuous process that requires the implementation of shared protection practices across all our sites and factories—reducing waste generation, optimizing energy and water consumption, and actively preventing pollution.

Through this approach, we want to demonstrate that economic development and environmental protection are not opposing goals, but can go hand in hand when guided by vision, responsibility, and respect for future generations.



[www.cona.ro](http://www.cona.ro)

## Contact:

### CONA Main Office

📍 2B Mihai Viteazu Street  
Șelimbăr, Sibiu County  
☎ +40 721 237 982  
✉ [office@cona.ro](mailto:office@cona.ro)

### Factory for Carpentry and Sheet Metal Elements

📍 6 Frigoriferului Street  
Sibiu, Sibiu County  
☎ +40 269 560 419  
✉ [tamplarie@cona.ro](mailto:tamplarie@cona.ro)

### Metal and Prefabricated Elements Factories

📍 1 Uzinei Street, Mârșa, Sibiu County  
☎ +40 269 560 408  
✉ [ofertare.prefabricate@cona.ro](mailto:ofertare.prefabricate@cona.ro)  
[metal@cona.ro](mailto:metal@cona.ro)

### Architecture and Design Office CONDESIGN

📍 32nd Avram Iancu Street  
Cluj Napoca, Cluj County  
☎ +40 369 105 781  
✉ [office@condesign.ro](mailto:office@condesign.ro)



